

HYDRANT & AIR VALVE ISOLATION VALVE PN35

Version 1.0

Clover Hydrant & Air Valve Isolation Valves are suitable for use in pressure water supply applications.

SPECIFICATIONS

Diameter Range: DN80 – DN100

Nominal Pressure: 3,500kPa

End Connections: AS/NZS4087 Fig. B6

Maximum Operating Temperature:

70° (40° maximum for AS/NZS4020 compliance)

Product Certification:

Australian Certification Services - 30048

Compliance:

- NZS4522 "Underground fire hydrants"
- AS/NZS4158 "Thermal-bonded polymeric coatings on valves and fittings for water industry purposes"
- AS1646 "Elastomeric seals for waterworks purposes"
- AS1831 "Ductile cast iron"
- AS/NZS4087 "Metallic flanges for waterworks purposes"
- AS/NZS4020 "Testing of products for use in contact with drinking water"

WSAA Product Appraisal: PA18/17

WSAA Purchase Specification:

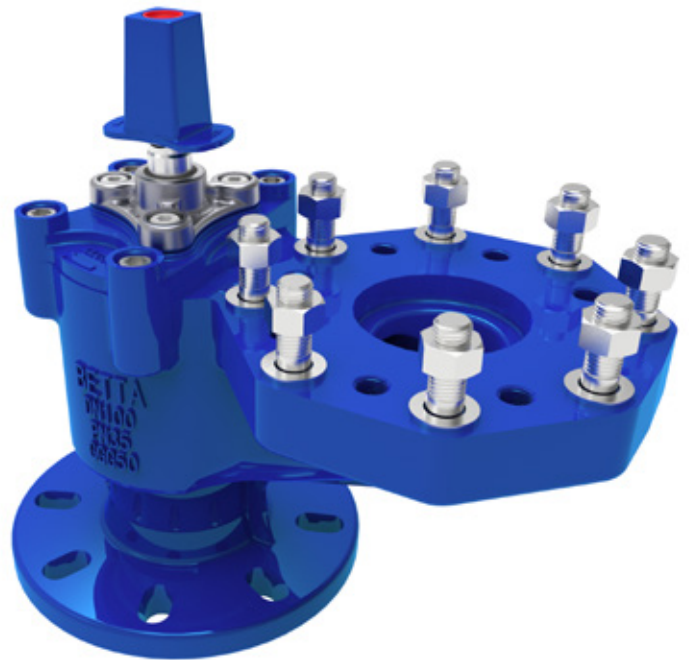
- WSA PS282 – Hydrant and Air Valve Isolator Valves Water Supply

Options & Accessories:

- Lilac coloured yoke for non-potable water applications
- Spring Hydrants
- Hydrant/Air Valve covers
- Hydrant/Air Valve marker posts
- Flange gasket kits
- Valve extension spindles

Recommended Specifications:

- Hydrant & air valve isolation valves shall be Clover type conforming to NZS4522
- Hydrant & air valve isolation valves shall be DN80 / DN100
- Hydrant & air valve isolation valves allowable operating pressure shall be 3,500kPa
- Protective coatings of Hydrant & air valve isolation valves shall be thermally applied polymeric type in accordance with AS/NZS4158
- Inlet flanges shall be raised face type in accordance with AS/NZS4087 Fig. B6



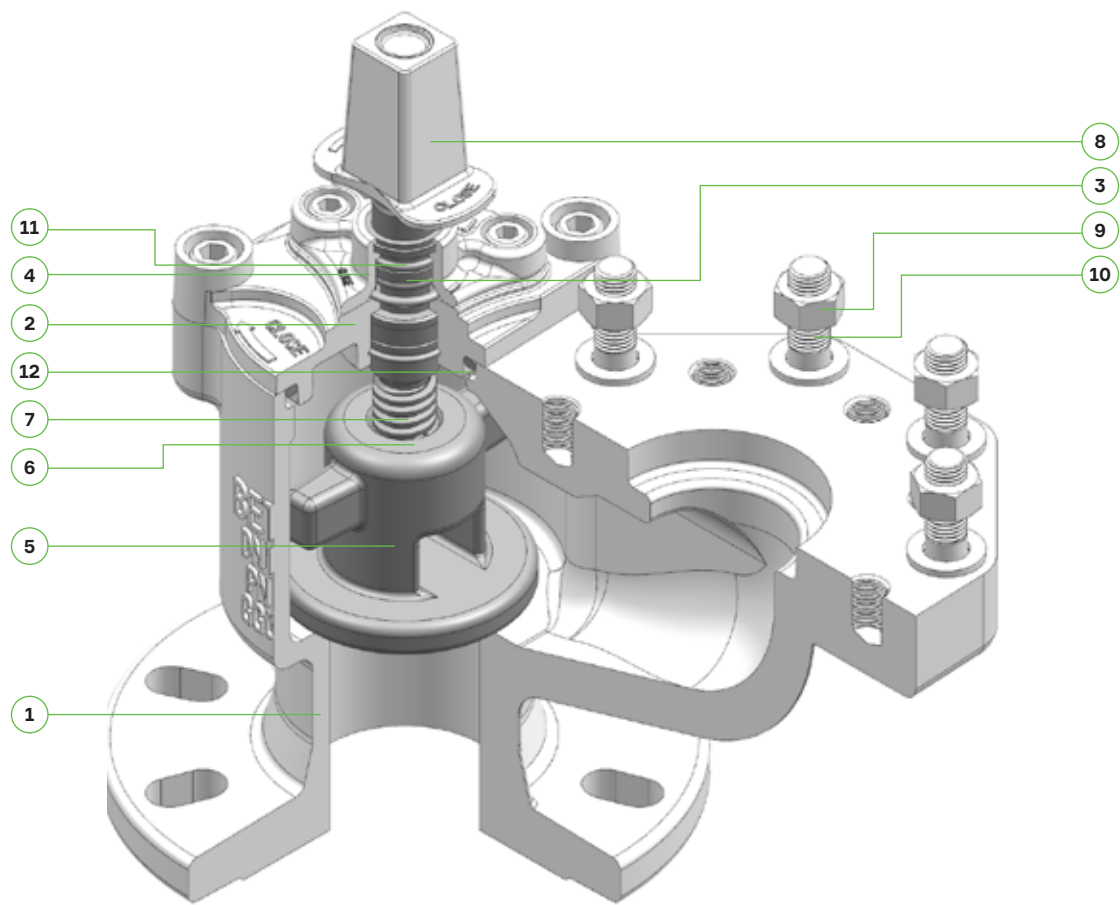
FEATURES

- 10 year manufacturers warranty
- Local inventory available
- Manufactured & certified to NZS4522
- Thermally bonded polymeric coating
- High strength and impact resistant ductile iron body and yoke
- Light weight environmentally friendly design for safe and simple installation
- Hydrostatically factory tested to guarantee field performance

APPLICATIONS

- Used in combination with hydrants and air valves to provide isolation of the accessory for maintenance.
- Potable and non-potable water supply
- Irrigation and raw water
- Fire systems
- Buried and above ground

HYDRANT & AIR VALVE ISOLATION VALVE PN35



COMPONENTS

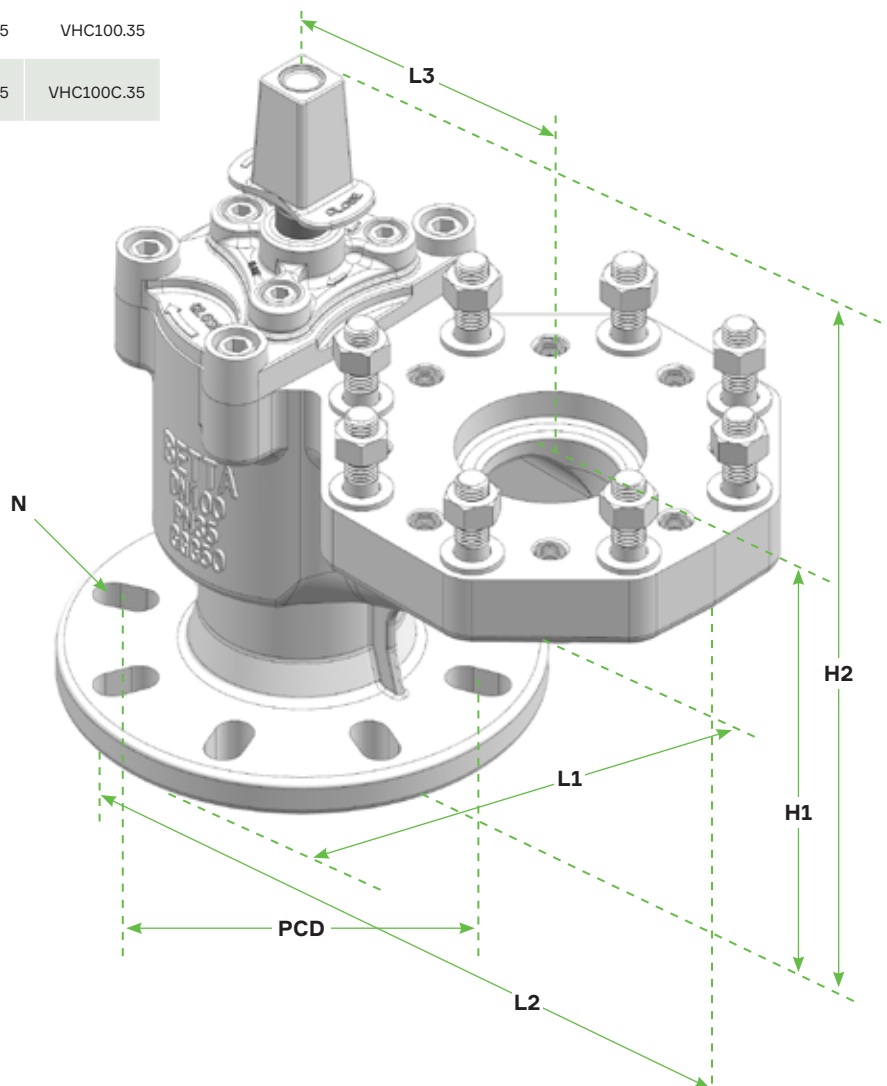
ITEM	PART NAME	MATERIAL	STANDARD/GRADE
1	Body	Ductile Iron/Polymeric Coating	AS1831 500-7/AS4158
2	Bonnet	Ductile Iron/Polymeric Coating	AS1831 500-7/AS4158
3	Spindle Seal Retainer	Copper Alloy (Dezincification Resistant)	AS1568 C48600
4	Seal Retainer Housing	Stainless Steel	ASTM A251/316
5	Stopper	Ductile Iron (EPDM Encapsulated)	AS1831 500-7 / AS1646/EPDM
6	Stem Nut	Copper Alloy	AS1568 C48600
7	Spindle	Stainless Steel	ASTM A276/431
8	Spindle Key Cap	Ductile Iron/Polymeric Coating	AS1831 500-7/AS4158
9	Hex Nut	Stainless Steel	ASTM A276/316
10	Studs	Stainless Steel	ASTM A276/316
11	O'Ring	NBR Elastomer	AS1646/NBR
12	Middle Gasket	EPDM Elastomer	AS1646/EPDM

HYDRANT & AIR VALVE ISOLATION VALVE PN35

SPECIFICATIONS	SYM	UNITS	DN80	DN100
LENGTH (FLANGE WIDTH)	L1	mm	230	230
LENGTH (OVERALL)	L2	mm	388	388
LENGTH (CENTRE INLET TO CENTRE OUTLET)	L3	mm	164	164
HEIGHT (FLANGE TO FLANGE)	H1	mm	215	215
HEIGHT (BASE TO TOP OF SPINDLE)	H2	mm	342	342
FLANGE BOLT HOLES	N	mm	8-Ø18	8-Ø18
PITCH CIRCLE DIAMETER	PCD	mm	165	191
WEIGHT OF UNIT		Kg	27	27
TURNS TO CLOSE (APPROX)		Turns	6	6
MAXIMUM OPERATING TORQUE		Nm	75	75
PRODUCT CODE (ANTI-CLOCKWISE CLOSE)			VHC080.35	VHC100.35
PRODUCT CODE (CLOCKWISE CLOSE)			VHC080C.35	VHC100C.35

PRESSURE	SYM	UNITS	
PRESSURE NOMINAL	PN	Nom	35
ALLOWABLE OPERATING PRESSURE	AOP	kPa	3,500
MAXIMUM ALLOWABLE OPERATING PRESSURE	MAOP	kPa	4,200
ALLOWABLE SITE TEST PRESSURE	ASTP	kPa	4,375
PRODUCTION TEST – BODY		kPa	5,250
PRODUCTION TEST – SEAT		kPa	3,850

All dimensions are in millimetres.



The products shown form part of our continuous improvement program and as such the product designs, specifications and materials may be changed without notice. All warranties relating to accuracy, completeness, or suitability for any particular purpose and all liability for any loss, damage or costs incurred relating to the use of this information are excluded.