



POLYETHYLENE PIPE & FITTINGS

**AS/NZS4130 – Polyethylene (PE)
pipes for pressure applications**

**AS/NZS4129 – Fittings for polyethylene
(PE) pipes for pressure applications**

Version 2.0

WE ARE CLOVER, AN INTEGRATED PIPELINE INFRASTRUCTURE BUSINESS

Founded by a passionate team of industry professionals, we combine strategic project consultation, product innovation and service excellence. We work with local and global partners to specify world-leading pipelines across Australia and the Asia Pacific region.

Future facing pipeline infrastructure

We believe in new ways of doing —and at Clover, we do things differently. We don't rest on the past, or the present, we're committed to consistent innovation that supports existing communities and establishes new ones.

Australia's most complete pipeline infrastructure provider.

We partner with our clients to offer holistic design-led packages that go beyond supply and delivery—bridging the gap between the design, source and supply of pipeline infrastructure systems.

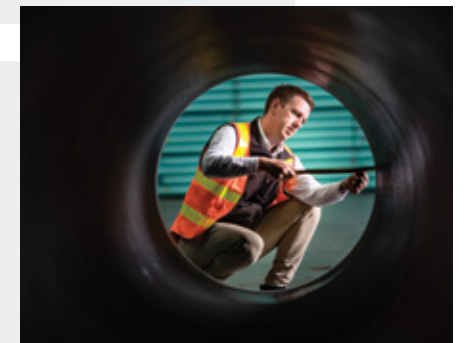
PLAN

Clover's inhouse engineering team combines specialist technical knowledge, creative thinking and on-the-job experience, to offer our clients a range of project planning and design consultation services.



SOURCE

Constantly pushing to challenge what's achievable, Clover harnesses an extensive network of product partners to bring our clients the competitive advantage that comes with choice, availability and cutting edge innovation.



SUPPLY

In a project based industry, timing is everything. At Clover, our approach to supply and distribution is based around a dedication to consistency, responsiveness and service excellence.



SIZE CHART

Pipe

POLYETHYLENE PE100 - SERIES 1 (AS/NZS 4130)							
PN	4	6.3	8	10	12.5	16	20
SDR	41	26	21	17	13.6	11	9
DN	Mean ID (mm)						Standard Length
16							12.8 12.4 50 or 400 m
20							16.8 16.4 15.6 50 or 400 m
25							21.8 21.3 20.5 19.4 50, 100 or 400 m
32							28.8 28.2 27.3 26.2 24.9 50, 100 or 400 m
40							36.2 35.3 34.1 32.7 31.1 50 or 150 m
50							45.2 44.1 42.6 40.9 38.9 50 or 150 m
63							59.2 57.0 55.6 53.7 51.5 49.0 50 or 100 m
75							70.5 67.9 66.2 64.0 61.4 58.3 12, 20 or 100 m
90							84.5 81.4 79.4 76.8 73.6 70.0 12, 20 or 100 m
110	104.6	103.3	99.5	97.1	93.8	90.0	85.6 12, 20 or 100 m
125	118.9	117.4	113.1	110.3	106.6	102.3	97.2 12, 20 or 100 m
140	133.2	131.5	126.7	123.5	119.4	114.5	108.9 12 or 20 m
160	152.2	150.3	144.8	141.2	136.5	130.9	124.4 12 or 20 m
180	171.2	169.1	162.9	158.8	153.5	147.3	140.0 12 or 20 m
200	190.2	187.9	181.0	176.5	170.6	163.6	155.6 12 or 20 m
225	225	214.0	203.6	198.5	191.9	184.1	175.0 12 or 20 m
250	237.8	234.8	226.2	220.6	213.2	204.5	194.4 12 or 20 m
280	266.3	263.0	253.3	247.1	238.8	229.1	217.8 12 or 20 m
315	299.6	295.9	285.0	277.9	268.7	257.7	245.0 12 or 20 m
355	337.7	333.5	321.2	313.2	302.8	290.5	276.1 12 or 20 m
400	380.5	380.5	361.9	352.9	341.2	327.3	311.1 12 or 20 m
450	428.0	422.7	407.1	397.1	383.8	368.2	350.0 12 or 20 m
500	475.6	469.7	452.4	441.2	426.5	409.1	388.9 12 or 20 m
560	532.7	526.1	506.7	494.1	477.6	458.2	435.6 12 or 20 m
630	599.3	591.8	570.0	555.9	537.4	515.5	490.0 12 or 20 m
710	675.4	667.0	642.4	626.5	605.6	580.9	552.2 12 or 20 m
800	761.0	751.5	723.8	705.9	682.4	654.5	622.2 12 or 20 m

Nominal diameter (DN) equals outside diameter.
Contact your local Clover sales office for details on DN900 to DN2000 pipe diameters & rural pipe 3/4" - 2".
Alternate lengths available on request.

Striping and colour coding guide

BLACK NO STRIPE
BLACK / BLUE STRIPE
BLACK / LILAC STRIPE
BLACK / YELLOW STRIPE
BLACK / RED STRIPE
LILAC
ORANGE
WHITE
WHITE

- All applications except for fuel gases
- Potable water
- Recycled or reclaimed non-potable water
- Gases under pressure
- Water for fire extinguishing
- Recycled or reclaimed non-potable water
- Electrical conduit
- Above ground pipelines
- Communications conduit

PRODUCT RANGE

ELECTROFUSION



Coupler



Reducing Coupler



Elbow



Tee



End Cap



Transition Coupler



Saddle



Welding Wipes



Transition Elbow

PRODUCT RANGE

SPIGOT



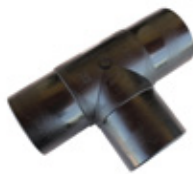
Stub
Flange



Elbow



Backing
Ring



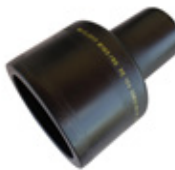
Tee



Maxi-Stub



End Cap



Reducing
Coupler



Bend

Available in both long spigot and short spigot ranges.

PRODUCT RANGE

COMPRESSION



Coupling



Tee



Reducing
Coupler



End Cap



Adaptor



Tapping
Saddle



Elbow



Flange
Coupling

Available in both Metric & Rural.

VALVES & INSTRUMENTATION



Gate



Isolation



Air



Check



Butterfly



Flowmeter



Ball



Knife Gate

FABRICATION

Clover specialises in the supply of a complete range of high-quality custom fabricated polyethylene pipe and fittings to meet our client's specification.

- Pipe Spools
- Sweep & Segmented Bends
- Tees & Y's
- Manhole & Thrust Connectors
- Manifolds

Using the latest technology and equipment, all products are manufactured under an ISO9001 Quality Management System by fully qualified and experienced staff.

Get in touch to find out more about our fabricated products:

solutions@cloverpipe.com.au

www.cloverpipe.com.au/contact

PRODUCT RANGE

THREADED



Nipple



Socket



Reducing Nipple



Elbow



Reducing Bush



Tee



Plug



Threaded Riser



End Cap

Manufactured from Polypropylene for increased strength and enhanced chemical resistance.

PRODUCT RANGE

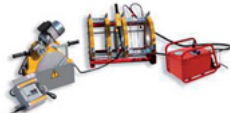
TOOLS



Electrofusion Welding Units



Pipe Cutters & Bevelers



Butt Fusion Welding Units



Pipe Re-Rounders



Top-Loading Saddle Kits



Alignment Clamps



Pipe Scrapers & Peelers



Squeeze Off Tools

Clover Pipelines Pty Ltd



solutions@cloverpipe.com.au

www.cloverpipe.com.au



Printed on 100% recycled paper

VIC +61 3 8373 8000

NSW +61 2 8279 8000

WA +61 8 6166 6800

SA +61 8 8120 4600

QLD +61 7 3073 7000

TAS +61 3 6111 9500

NT +61 8 7999 8400

INT +61 3 8373 8000