



MINING & RESOURCES

FUTURE FACING PIPELINE INFRASTRUCTURE.

WE ARE CLOVER, AN INTEGRATED PIPELINE INFRASTRUCTURE BUSINESS.

Our highly experienced team combines robust, reliable service with versatile capability in the delivery of unique product solutions for a wide spectrum of mining and resource applications.

As a total-package provider, it's about end-to-end quality at every stage of a project: considered solution design, rapid procurement, dependable supply, durable products and responsive service.



“Clover hit the bullseye every time, even when the target was moving. That’s the level of service we demand when you’ve got guys and machinery ready to go on site. It has to be perfect, and it has been.”

Simon, Mechanical Services
Coordinator, Project Atlas

PLAN

Every mining and resource project is unique. Regardless of commodity—whether coal, iron ore, precious metals, lithium, or CSG—Clover combines specialist technical knowledge, creative thinking, and extensive experience to assist our clients with detailed project planning and consultation services.



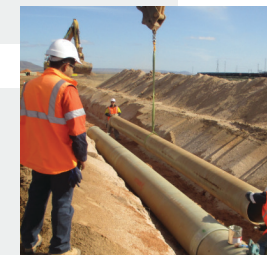
SOURCE

Total-package capability means a comprehensive ability to source a wide range of standard and custom products: rapidly, and as needs evolve on site. We offer a wide range of high quality products—certified to the relevant Australian and International standards—spanning fit-for-purpose Polyethylene, Steel, Ductile Iron, PVC and GRP pipe products to suit a range of mining applications.



SUPPLY

In the face of hard deadlines and shifting priorities, Clover is perfectly suited to deliver over the long haul: both in time and distance. With a national footprint across Australia and a proven ability to supply large scale remote mining projects, we’ve got the capability to support continual site operation.



MINING & RESOURCES CAPABILITY.

PROJECT ATLAS: A FULL-PACKAGE SOLUTION AS PART OF SENEX'S \$150 MILLION DOMESTIC CSG PROJECT

Solution overview

Greenfield build of new coal seam gas processing infrastructure at Roma North—in the heart of Queensland's Surat basin—and a widespread network of associated delivery pipelines. Project Atlas is the first gas acreage to supply the domestic market for the east coast of Australia, transporting 15 petajoules per annum via a 60km buried pipeline to the Wallumbilla Hub.

Working on a remote project site like Roma North involves a two-tiered approach to project planning, logistics, sourcing, and supply. The first is steadfast reliability for standardised pipes or pre-designed products with longer lead times. The second is rapid-fire flexibility for specific sourcing and delivery of unique solutions with lightning quick turnarounds.

Project	Project Atlas, Roma North Coal Seam Gas Project
Who	Senex
Where	Roma, 500km West of Brisbane, Queensland Australia
When	2018 - 2019
Scope	Complete solution and supply partner, including supply of traditional pipes and fittings, sourcing and implementation of custom solutions, and end-to-end long-haul logistics associated with rural site delivery nearly 500km west of Brisbane.

View the case study: www.cloverpipe.com.au/case-studies/project-atlas/

“

“Clover continuously provided quality products and reliable service, frequently expediting critical materials with a level of support rarely seen from other suppliers. As a one-stop shop with a direct point of contact, we got what we needed, when we needed it. Hassle free.”

Daniel, Project Engineer, Project Atlas

Our products

- Polyethylene Pipe & Fittings
- GRP Pipe & Fittings
- Steel Pipes & Fittings
- Ductile Iron Pipe & Fittings
- PVC Pipe & Fittings
- Valves & Instrumentation
- Couplings & Connections

View our complete product range: www.cloverpipe.com.au/product/



Connect with our Mining & Resources specialist for more information.



Mark Gould

Mining & Resources Manager

TEL: 0477 221 443

With over 15 years' experience spanning civil and mining roles with some of Australia's major pipeline suppliers, Mark's knowledge of our complete suite of PE, GRP, Steel, Ductile Iron and PVC products ensures he's strongly placed to facilitate full package solutions: at scale, across the country. With a team of more than seventy project engineers, estimators, design consultants and sales professionals backing him, Mark has robust support to deliver large scale mining projects.

Clover Pipelines Pty Ltd



mining@cloverpipe.com.au

www.cloverpipe.com.au

QLD +61 7 3073 7000

WA +61 8 6166 6800

NSW +61 2 8279 8000

NT +61 8 7999 8400

VIC +61 3 8373 8000

SA +61 8 8120 4600

TAS +61 3 6111 9500